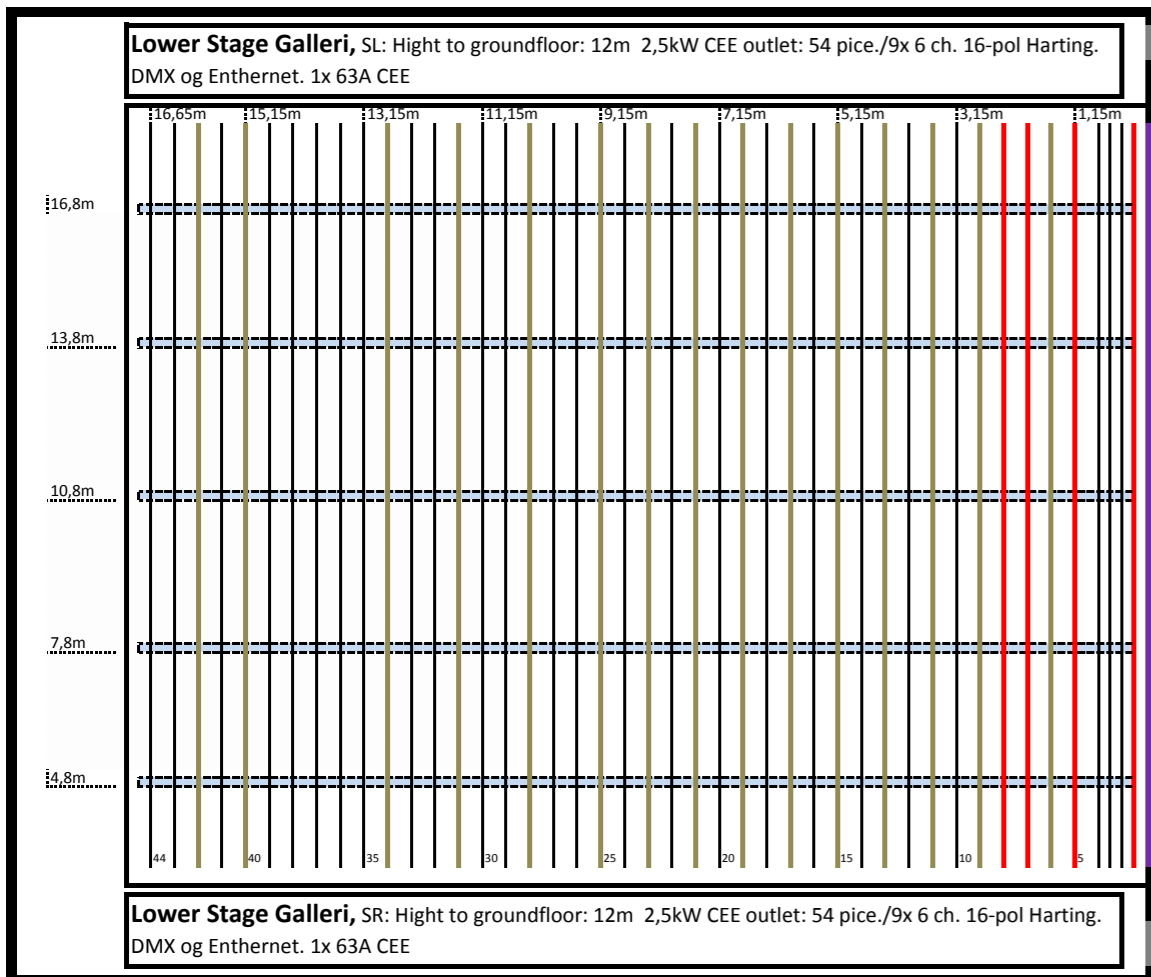


Planoversigt scene og strøn / Overview stage and power.

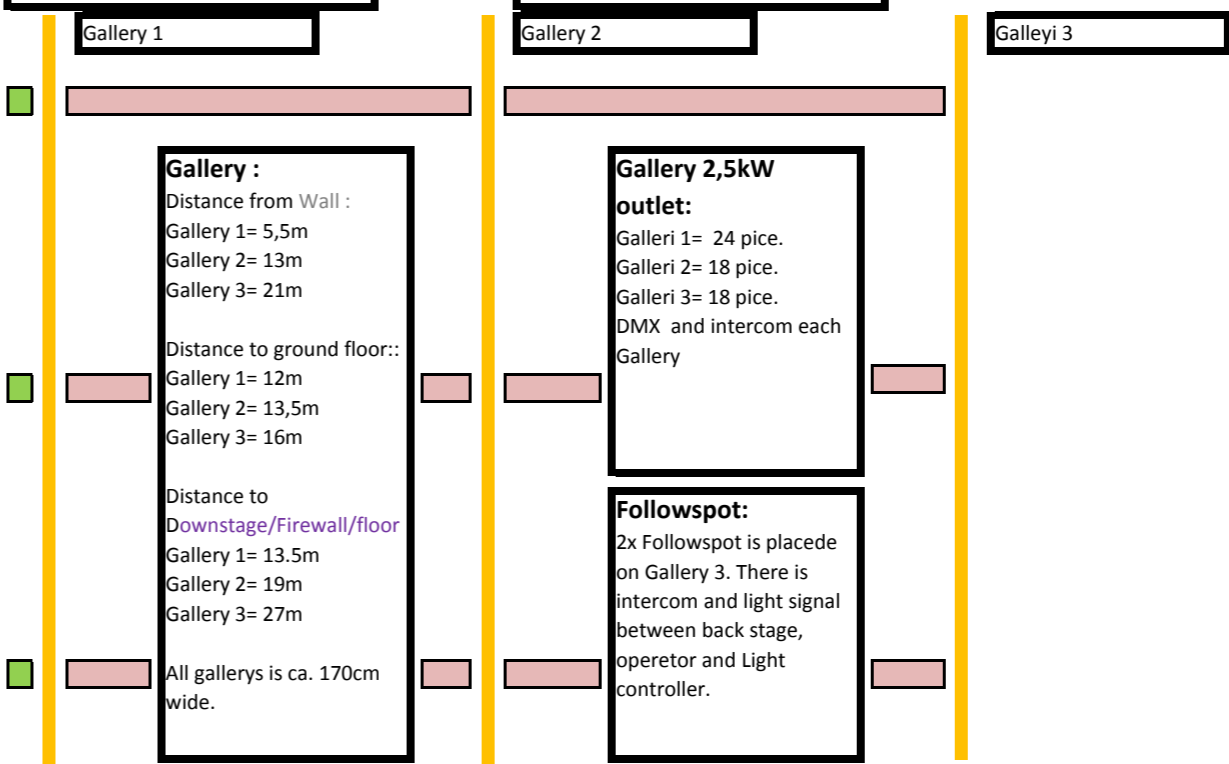
Ret til ændringer forbeholdes / Under construction. Date: 6/2 2018



Stage dimensions:
 Opening, wide: 16m
 Opening, high: 10m
 Floor Wide: 21,5m
 Floor Deep 18m
 Heigt Stage Tower : 23m

3x1 1T crane. 5m from wall.
 14m 30x30 black truss
 parrallel with the stage

3x2 1T crane. 2 piece
 movable 14m 30x30 black truss
 parrallel with the stage.



Flybars, Power, DMX, Ethernet, Intercom and light signalsystem.

Flybars: 44 pice. Max load on Flybars: 500kg. (200kg under wire, 100kg between 2 wires, 150 kg evenly distributed. 6 wire suspension). Distance between Flybars: 40 cm. (Flybar 1 to 4 is between 20-30 cm).

NON Useable flybars: Teaser to lower stage high to 7m, on flybar 1. Maincurtain on flybar 5. AV Screen (9x5,6m) on flybar 7. ACTcurtain on flybar 8.

Flybars, Gallery on stage: 1 pice on each of the lower Stage Gallery. 3 in total. Max load on Flybars: 800kg. (200kg under wire, 100kg between 2 wires, 150 kg evenly distributed. 6-8 wire suspension).

Movable fix point: 10 pice movable crane beam. 2 pice on each blue line. It's possible to mount 1 pice 1T crane on each crane beam. (ODEON has no extra cranes). **To avoid damish, the extra crane has to be mount with 3m steelwire.**

MAX LOAD STAGE TOWER: 15,000 Kg, evenly distributed.

Truss. 3x 14m truss parrallel with the stage in Auditorium. 1 fix fronttruss, 5m from stage. 2x movable truss in Auditorium. 1 DMX Universe and 3x 6ch. 3kW outlett on each truss

Power on fly-bars: 3kW CEE outlet. 12x outlet on following fly-bars: 6 - 9 - 11 - 13 - 15 - 17 - 19 - 21 - 23 - 25 - 28 - 31 - 34 - 40 - 42. 5x 5kW CEE movable outlet fly-bars.

Outlet in each corner, Stage: 12x 3kW CEE outlet/2x 6ch. 16-pol Harting. 1x 5kW CEE outlet, 1x DMX and Ethernet.

Guest DMX line, FOH 1. balcony: 4x DMX and 1x Ethernet/ETC Response 4 Port Gateway 4 XLR5 Outputs to 16 programable universe. (8x movable wireless on flybars/floor. 1 universe on each truss i Auditorium, 1 universe on all Gallery, 2 Universe Houseligt, 2 Universe for Guest Use).

Guest power LIGHT: 2x 125A CEE Outlet: (KS) SR upstage. 1x 400V Powerlock: (DS) SL upstage. Powerlock rack connected with: 2x 125A CEE outlet, 4x 63A CEE outlet, 2x 32ACEE outlet, 4x 16A CEE outlet, 6x 16/1 CEE outlet. 400V Powerlock link. 20m cable. Rack placede: (KS) SRupstage.

Guest power SOUND: 1 stk 63A CEE outlet with PDBOX connectet: 63A->1x 63A. 1x 32. 4x 16/3. 6x 16/1. 4x DK. Rack placed (DS) SR downstage.

Power on snoreloft / Stagetower: 1x 63A CEE outlet (KS), SR, downstage. 1x 63A CEE outlet (DS), SL, upstage. 1x 16A CEE outlet (KS), SR, upstage. 1x 16A CEE outlet (DS), SL, downstage

Intercom: Complet intercom with 10 cable and 6 wireless beltpacks. Cable outlet on Gallerys, controlroom, each stagecorner and FOH positions. Wireless only in stage area.

Light Signalsystem: 10x Light Signalsystem. Cable outlet on Gallerys, each stagecorner, controlroom and FOH positions

Drabes: Main Curtain: Black. Motorcontrolled. Back drop: 1 pice 17x11m. Side drop: 12 pice 3x11m. Suffit: 3pieces 17x3m. ACT curtain: 2x 9x11m Overlab 1m. Manual move.