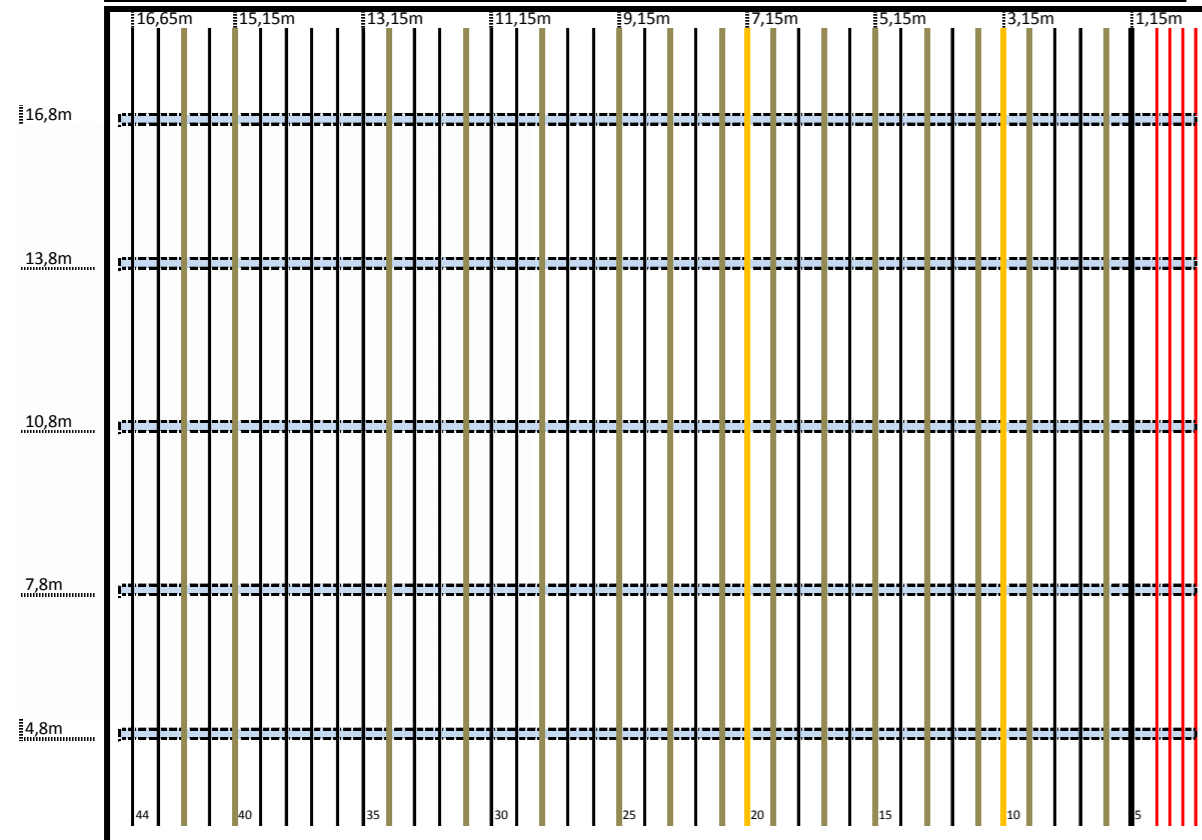


Planoversigt scene og strøn / Overview stage and power.

Lower Stage Galleri, SL: Hight to groundfloor: 12m 2,5kW CEE outlet: 54 pice./9x 6 ch. 16-pol Harting. DMX og Enthernet. 1x 63A CEE



Lower Stage Galleri, SR: Hight to groundfloor: 12m 2,5kW CEE outlet: 54 pice./9x 6 ch. 16-pol Harting. DMX og Enthernet. 1x 63A CEE

Ret til ændringer forbeholdes / Under construction. Date: 15/6 2017

Stage dimensions:

Opening, wide: 16m
Opening, high: 10m.
Floor Wide: 21,5m.
Floor Deep 18m
Heigt Stage Tower : 23m.
Hight with seats 40 cm

1T crane. 5m from wall.
6m between point.

3x2 1T crane. There is 3 through crane beams, each with 2 cranes on each.



Flybars, Power, DMX, Ethernet, Intercom and light signalsystem.

Flybars: 44 piece. Max load on Flybars: 500kg. (200kg under wire, 100Kg between 2 wires, 150 kg evenly distributed. 6 wire suspension). Distance between Flybars: 40 cm. Flybars markt with red is non usable.

Maincurtain on 5,th flybar.

Flybars, Gallery: 1 piece on each of the lower Stage Gallery. 3 in total. Max load on Flybars: 800kg. (200kg under wire, 100Kg between 2 wires, 150 kg evenly distributed. 6-8 wire suspension).

Optimal fixt point: 10 pice movable crane beam. 2 pice on each blue line. It's possible to mount 1 pice 1T crane on each crane beam. (ODEON has no extra cranes). To avoid damish, the extra crane has to be mount with 3m steelwire.

MAX LOAD STAGE TOWER: 15,000 Kg, evenly distributed.

Power on fly-bars: 2,5 kW CEE outlet. 12x outlet on following fly-bars: 6 - 9 - 11 - 13 - 15 - 17 - 19 - 21 - 23 - 25 - 28 - 31 - 34 - 40 - 42. 5 kW CEE outlet. 3x Outlet on following fly-bars: 10. 5 kW CEE outlet. 2x Outlet on following fly-bars: 20

Outlet in each corner, Stage: 12x 2,5kW CEE outlet/2x 6ch. 16-pol Harting. 1x DMX and Ethernet.

Guest DMX line, Stage: 4x DMX and Ethhernet input (KS) SR downstage to DMX rack, Basement

Guest DMX line, Controlroom and Auditorium: 4x DMX and 2x Ethernet from sound/light controlroom and middle on the floor, front of the mobil tribune to DMX rack, Basement.

Guest power LIGHT: 2x 125A CEE Outlet: (KS) SR upstage. 1x 400V Powerlock: (DS) SL upstage. Powerlock rack connected with: 2x 125A CEE outlet, 4x 63A CEE outlet, 2x 32ACEE outlet, 4x 16A CEE outlet, 6x 16/1 CEE outlet. 400V Powerlock link. 20m cable. Rack placed: (KS) SR upstage.

Guest power SOUND: 1 stk 63A CEE outlet with PDBOX connectet: 63A->1x 63A. 1x 32. 4x 16/3. 6x 16/1. 4x DK. Rack placed (DS) SR downstage.

Power on snoreloft / Stagetower: 1x 63A CEE outlet (KS), SR, downstage. 1x 63A CEE outlet (DS), SL, upstage. 1x 16A CEE outlet (KS), SR, upstage. 1x 16A CEE outlet (DS), SL, downstage

Intercom: Complet intercom with 10 cable and 6 wireless beltpacks. Cable outlet on Gallery bars, controlroom and FOH positions

Light Signalsystem: 10x Light Signalsystem. Cable outlet on Gallery bars, controlroom and FOH positions

Drabes: Main Curtain: Black. Motorcontroled. Back drop: 1 piece 11x17m. Side drop: 12 piece 3x 11m